



Staffordshire
Wildlife Trust



PEAK
DISTRICT
NATIONAL
PARK

Landscape Recovery

Morridge Hill Country Landscape Recovery Project

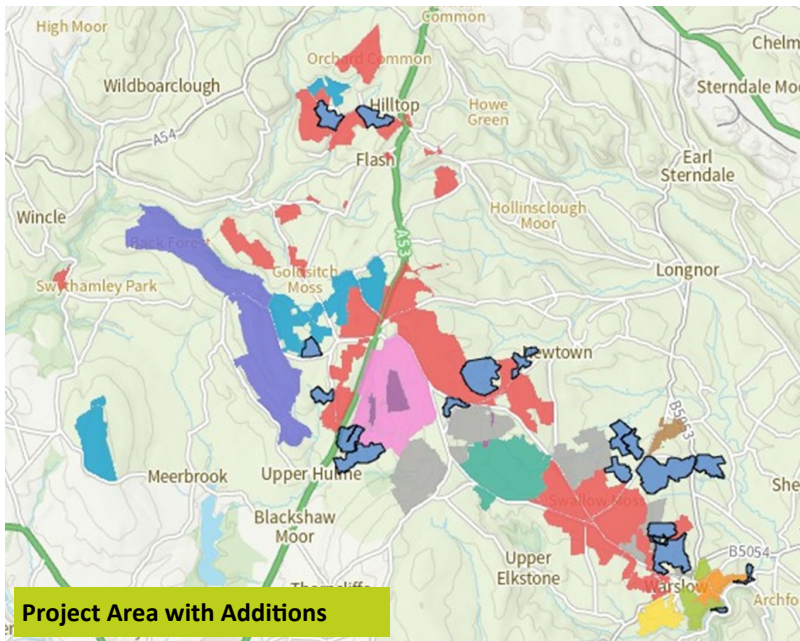
Project Area Additions

DEFRA approved an additional 6 farmers joining the project bringing in an additional 344ha.

MHC now includes 21 farmers from both tenanted and private farms.

Project area increased to 2900ha with increased contiguity of the landscape recovery area.

No further additions can be made to the development phase.

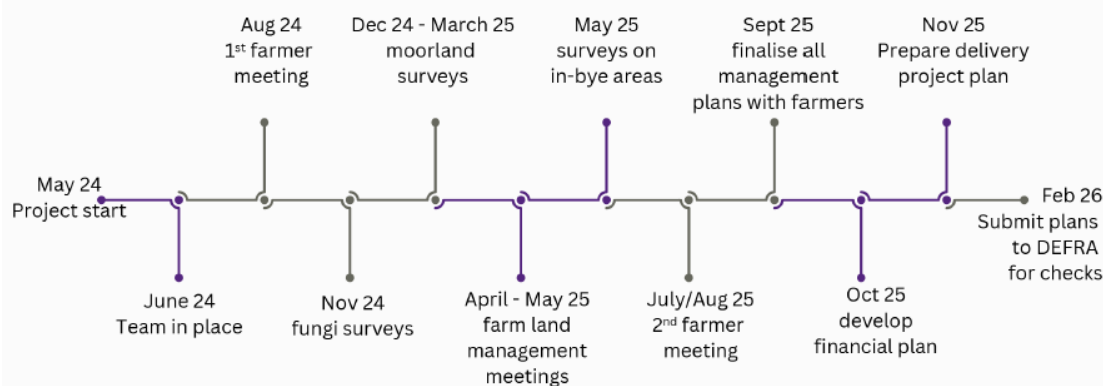
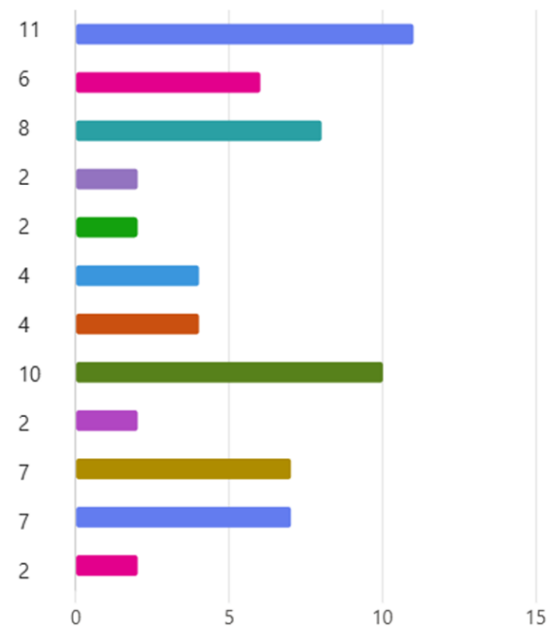


Farmer Interviews

16 farmers have had interviews with Rob Townsend, Farm Adviser. Findings are feeding into the development of the project.

Online surveys also conducted alongside these meetings. Land management plan meetings starting this month.

- Species rich grassland
- Waders
- Rivers and streams
- Blanket bog
- Ponds
- Waxcaps
- Moorland
- Rough grazing
- Woodland
- Hedgerows
- Infield trees
- Other



Project Time-line

To be shared with farmers in our upcoming project newsletter.

Stakeholder Engagement

Early stages developing a long-term vision for the landscape. Meetings with staff from Natural England, Environment Agency and Forestry Commission, RSPB.

Support provided from national experts on woodlands, wetlands and fungi.

Site visits to ascertain what the opportunities might be to enhance habitats within the project area.

Next phase to develop land management plan maps with farmers in meetings over the next 6 weeks.

Wider groups and local conservation groups will be engaged with over the summer.

Site visit with Forestry Commission and Environment Agency



Additional land parcel adjacent to the River Manifold

Blended Finance Plan

Land Use Consultants (LUC) are developing estimates for opportunities within the project area to create income from Ecosystem Services through Carbon Codes, Biodiversity Net Gain. Their work programme now includes engaging with potential buyers and investors and beginning to build a finance model.



Surveys and Modelling

- Approx. 60% of peatlands have undergone surveys for vegetation baseline, peat depth and restoration opportunities
- AI Landcover Map (above) developed using high resolution aerial imagery, work continuing on this.
- Moors for the Future conducting surveys investigating hydrology of moorlands In the project area to highlight intervention opportunities.
- Initial surveys carried out for important grassland fungi

Wetness Index Modelling work

